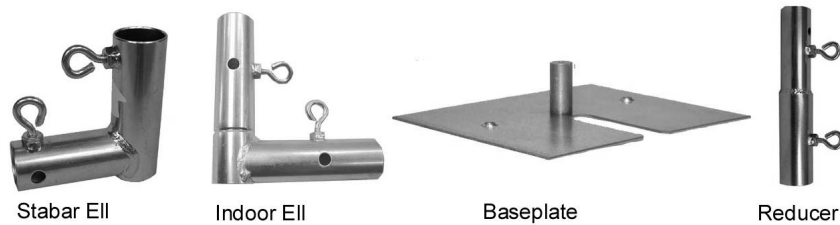
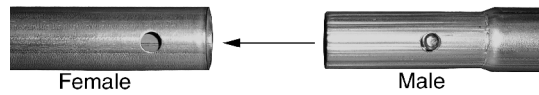


## Free Standing Wall

### Instructions for Assembly

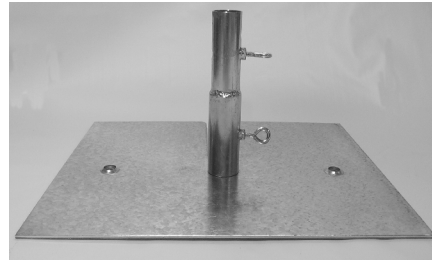
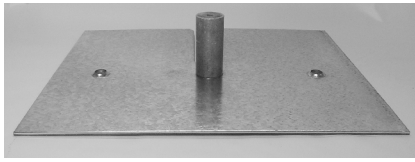
#### PARTS LIST:

- (4) Male Pole Sections - 61"
- (2) Female Pole Sections - 58 ¼ "
- (2) Female Pole Sections – 20" (32" if free stand wall is 8' tall)
- (2) Indoor Ell Joints
- (2) StaBar Ell Joints
- (2) Baseplates
- (2) Baseplate Reducers
- (13) Thumbscrews
- (2) Ball Bungees (for bundling poles)
- (1) Mesh Panel Display Wall – 10'



1. For each male pole section, slide a female pole section onto the male sleeve and click into place with the snap buttons. This will give you (2) 116 ½ " Horizontal poles, and (2) 77" Leg poles (89" for 8' tall frames).

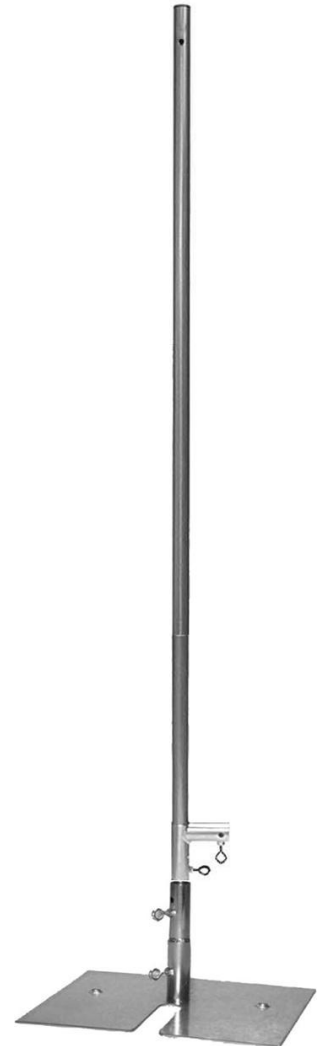
2. Thread thumbscrews a short distance into the nuts on all joints.
3. Assemble two baseplate units by sliding a baseplate reducer onto each baseplate, and tightening the lower thumbscrews on the reducers.



4. Assemble two legs as per sidebar illustration with 77" leg pole, StaBar ell, and baseplate/reducer unit. Stand the legs upright on baseplate units. Allow the StaBar ells to rest on top of the reducers. Refer to illustration.
5. Position the two legs approximately 10' apart.
6. Connect an indoor ell joint to each end of one 116 1/2" pole, then attach to the tops of the two upright legs. You may wish to use a step stool for this, and/or ask for a helper for a minute.



7. Attach a lower horizontal StaBar pole to the frame by sliding each end of a 116 1/2" pole into the StaBar ells on the legs (refer to the picture of the finished frame to see where this lower pole is positioned).



8. Attach Mesh Panels as per Mesh Panel Instructions.